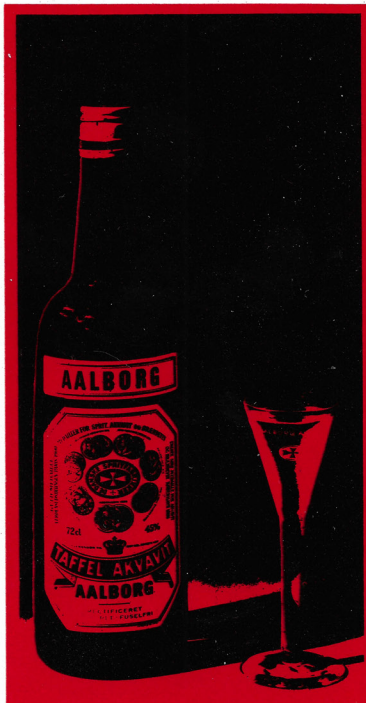
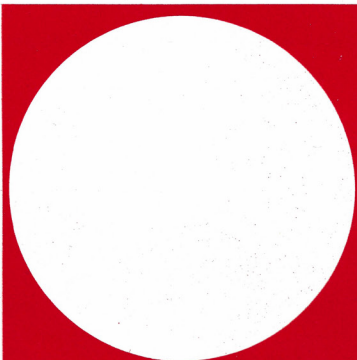
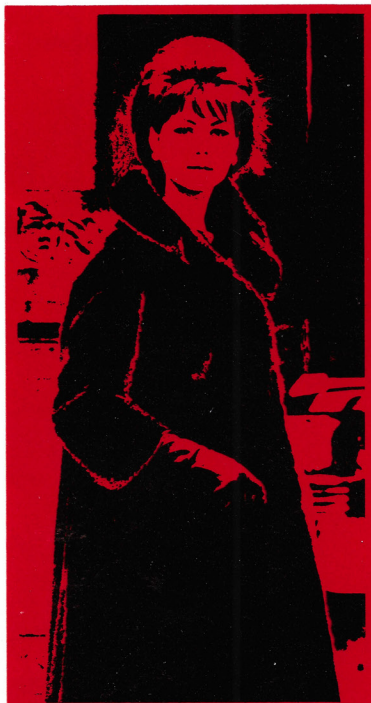


DENMARK REVIEW

PUBLISHED BY THE MINISTRY OF FOREIGN AFFAIRS · COPENHAGEN



**SPECIAL
EXPO 67
EDITION**

FROM LAMPS TO FACTORIES

At the age of 60, Danish architect Arne Jacobsen stands at the peak of his career. He is one of his country's most versatile architects, equally competent whether designing a chair, a factory or a parliament building.

The list of Arne Jacobsen's works is colossal, and many of his buildings have won international renown. These

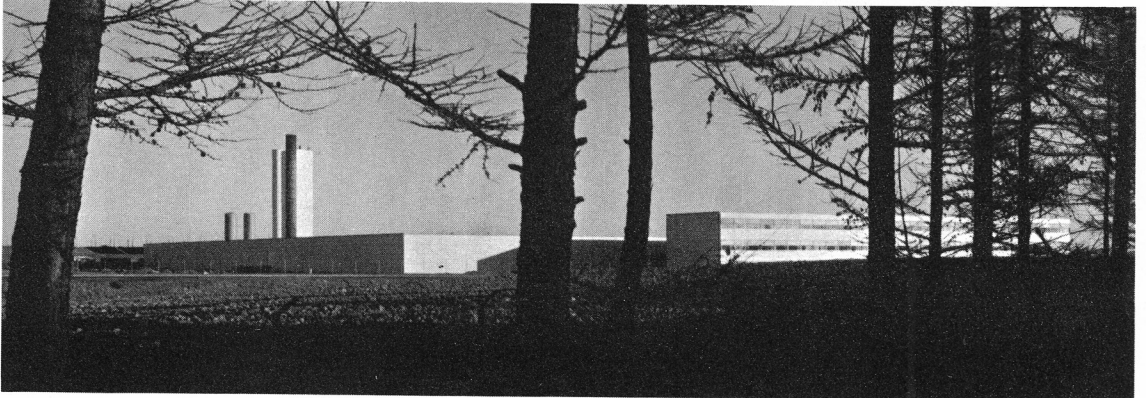
include the SAS Hotel in Copenhagen, St. Catherine's College, Oxford, the administrative buildings for the Hamburg electricity facility, and the Toms chocolate factory near Copenhagen, considered to be one of the most beautiful factory buildings in the world, and proof that factories do not

have to be ugly scars in the landscape, but can be architectural beauties that contribute to a nation's reputation.

Everything Arne Jacobsen touches bears the unmistakable mark of his creative ability, which has also pleased furniture manufacturers, textile producers and makers of light fittings.



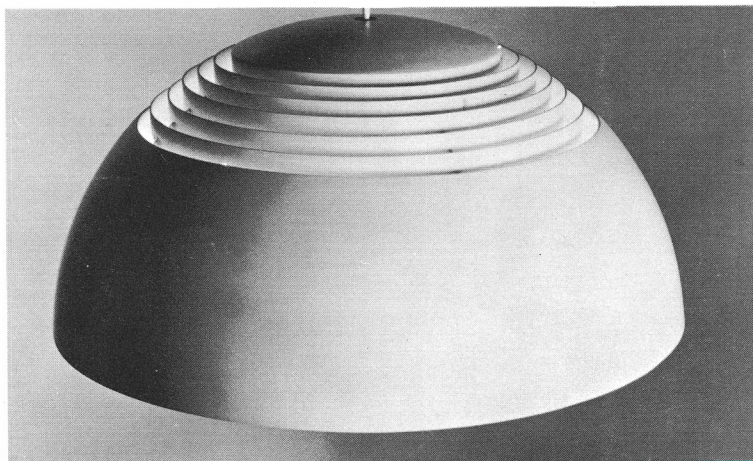
"The Egg," two "Swans" and a "Swan Sofa," designed by Arne Jacobsen for Fritz Hansens Eftf. A/S, Allerød, Denmark.



The Tom's Chocolate factory, Ballerup, designed by Professor Arne Jacobsen, is one of the finest examples of Danish industrial building.



*Writing-table lamp
designed by
Arne Jacobsen for
Louis Poulsen A/S.*



A. J. Lamp, designed for Louis Poulsen & Co.

SAS Hotel, Copenhagen.



EUROPE'S BIGGEST CONTROL MAKER

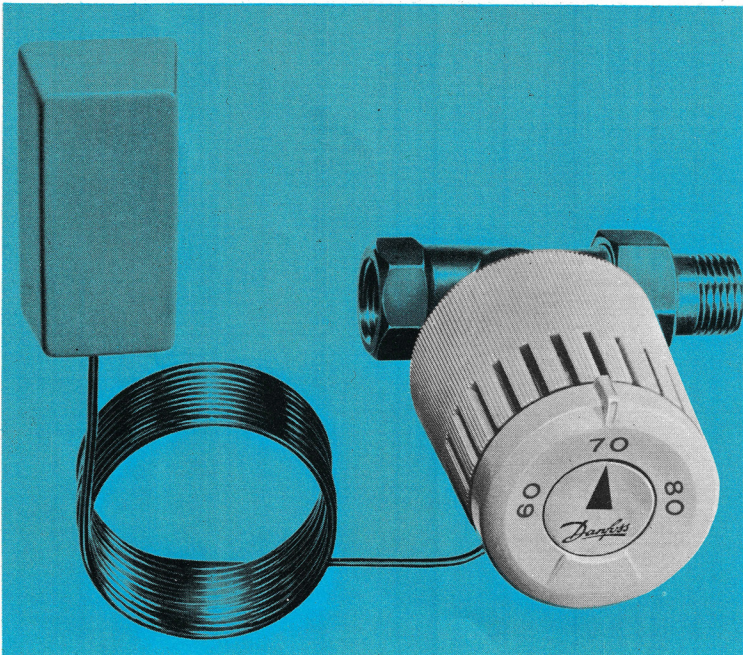
The largest factory in Europe producing automatic controls is in Denmark. Danfoss at Nordborg produce 2,000 different items in the field of automatic controls for both heating and refrigeration.

Last year the turnover was over 500 million D.Kr., or about 72 million dollars, and more than 8,000 persons are employed at Nordborg and in subsidiary companies in Canada, Australia, Italy, Japan, India and Great Britain.

Danfoss produce compressors as well as automatic controls, and their Canadian factory is at Port Credit, Ontario. Among other items, this factory makes thermostats for use in adjusting the temperature in centrally heated houses.

The RAV unit, as the product is called, is a non-electric, self-powered

The RAW unit.



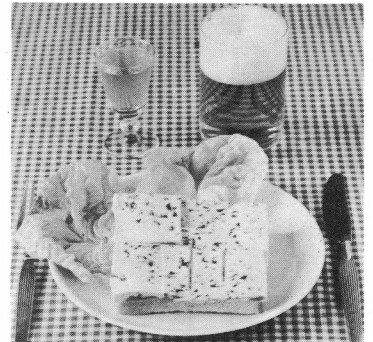
unit operated by means of a liquid/gas charge. The charge in the sensor expands and contracts according to sensor temperature, controlling the supply of heat.

Modulated control with RAV is an improvement to the on-off valve, as it reduces stratification and keeps the room temperature constant to the set figure to within plus or minus 2° F. It also minimizes expansion noise from baseboard radiators, and protects the radiator against freezing.

When the RAV is used, motorized valves, solenoid valves, room thermostats, balancing valves and the common manual valve are all eliminated. The RAV is usually located where the common hand shut-off valve would have been placed in the past.

Address: Danfoss, Nordborg, Als, Denmark.

DANISH CHEESE DRIVE IN CANADA



Blue Cheese varieties are an important export product.

To spread knowledge of Danish cheeses, the Danish dairy industry has now set up its own office in Toronto, and engaged representatives for Montreal and Vancouver.

The traditional Danish cheeses mainly sold in Canada are Danablu, Mycella and the firm or semi-firm types such as Samsø, Maribo, Fynbo, Tybo, Esrom, Havarti, Danish Ementhaler, Danish Brie, and Danish Camembert.

Denmark is the world's third-biggest cheese exporter, and Danish exporters are interested in increasing their contact with the markets in Canada and the United States.

To assist in this, the Danish dairy industry has recently arranged a number of shop campaigns, both in supermarkets and department stores. It is hoped that within a few years, the whole of Canada can be contacted through shop arrangements, and Danish cheese will still be presented at exhibitions such as the Canadian National Exhibition in Toronto. During the World Fair in Montreal, Danish cheese is presented by SAS Catering at the restaurants in the Scandinavian Pavillion.

Address in Canada: Denmark Cheese Association, Imperial Life Tower 44, Victoria Street 18th, Toronto 1.

MACHINES WORTH BILLIONS

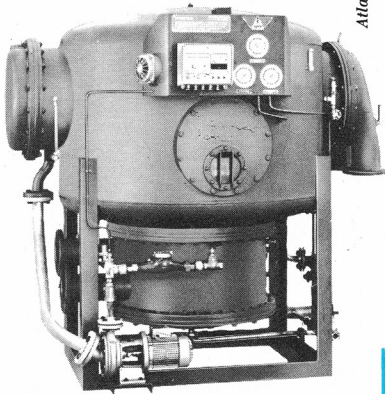
Denmark's annual export of industrial goods has long since passed the 1,000 million dollar mark, quite a good result considering that Denmark has less than five million inhabitants.

Of this export, the machinery industry can take the credit for nearly half the total, and here a large number of firms operating with thousands of specialty products are involved. Here are five examples:

Refimex makes a series of machines for pipe bending. They are used by tradesmen, shipyards, industrial concerns, on board ships etc. The machines, exported to 72 countries, include several hydraulic pipe bending machines for cold-bending of gas, water or steam pipe. The latest to date is an electrically powered hydraulic pipe bending machine for production line bending of gas, water and steam pipe. The machine is supplied complete with an automatic cut-off and bends a 3" steam pipe 90° in less than one minute.

Atlas, one of Denmark's biggest industrial concerns, has in its wide production range fresh-water generators for ships. The latest model, AFGU No. 5, has a capacity of 21—25 tons daily. Waste heat in the cooling system of the ship's diesel motor is used to turn sea water into drinking or boiler water by evaporation under high vacuum.

Atlas was the first firm in the world to produce fresh water generators for ships on this principle. More than 750 shipping companies, including the Canadian Department of Transport, Branch Lines Ltd., of Montreal, and Imperial Oil Ltd., of Toronto, have bought Atlas-Denmark fresh water generators, and more than 2,600 units have been sold. The Danish J. Lauritzen Lines, whose polar ships have for the last eight years kept up regular winter sailing on the St. Laurence River in spite of ice, have Atlas plant



Atlas fresh water generator (21—25 tons daily).

on board. The same is the case for many of the European trawlers that fish off the coasts of Newfoundland and many of the large and small tankers, bulk carriers and coasters sailing the seven seas.

Thrige-Titan A/S, known for their ship deck machines and marine centrifuges, have developed an automatically controlled pallet transport plant for loading and unloading ships. The plant is able to take pallets with up to two tons of cargo, and can take 60 pallets per hour. When the ship has moored, a port opens and a conveyer, carried vertically, is swung out over the quay to a horizontal position, and then adjusted to quay height. Trucks deliver pallets direct on the conveyer belt, which automatically starts and moves the pallet to an elevator on board. The storage programme for each pallet has been pre-determined and set on a control panel, and as the

pallet is delivered in the elevator, it is taken to the deck set on the programme. Here it is moved out on another conveyer to be picked up by one of the ship's electric trucks. During conveyer transport, each movement begins automatically as soon as the space ahead is clear.

Vilh. Pedersen A/S is one of Denmark's biggest producers of tooling machines, and has a considerable sale in Canada. About 15 years ago, Pedersen's machines were unknown in Canada, but today Pedersen's Milling Machines and Universal Tool and Cutter Grinders are used in large and small Canadian industrial concerns. Recently Pedersen introduced a new line of milling machines for automatic programme milling and tape control. The firm has its own service and sales organisation in Canada under the management of Mr. Georg Nielsen.

Sabroe, Aarhus, is a leading specialist in refrigeration plant, and Sabroe has a considerable sale in Canada, particularly of a two-stage eight cylinder low-temperature refrigeration compressor. The sale of industrial refrigeration equipment in Canada is carried out through Perrin-Turner Ltd., 34 Mendota Road, Toronto 18, Ont.

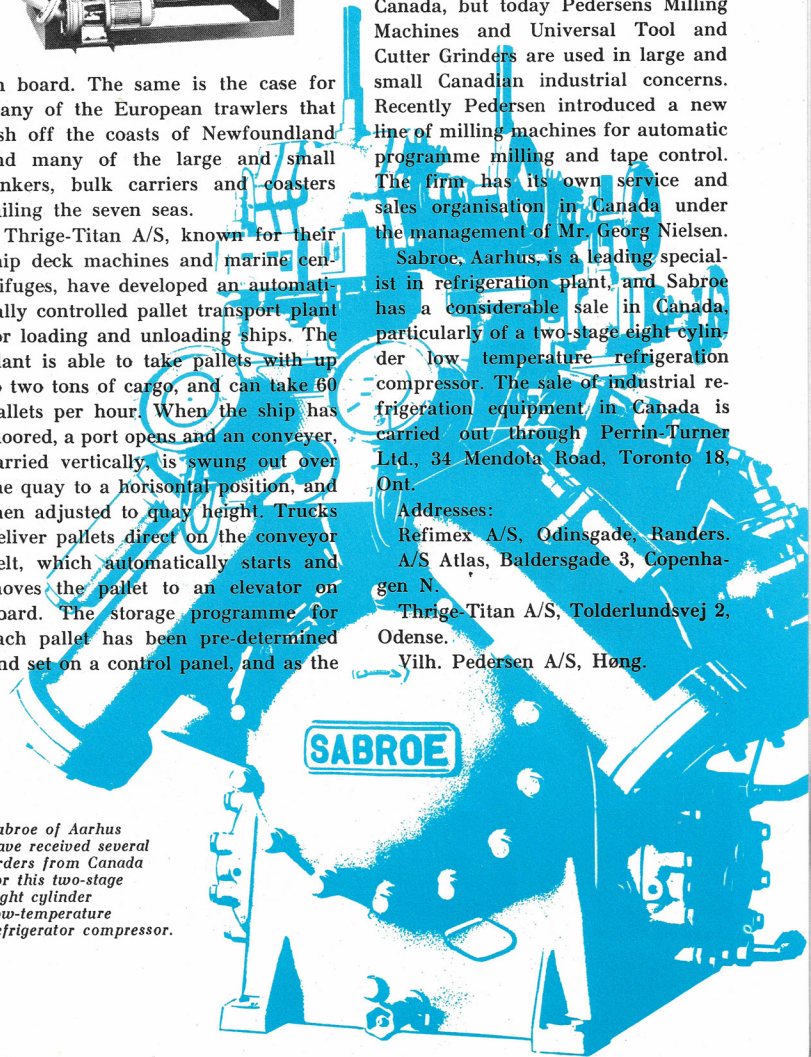
Addresses:

Refimex A/S, Odinsgade, Randers.
A/S Atlas, Baldersgade 3, Copenhagen N.

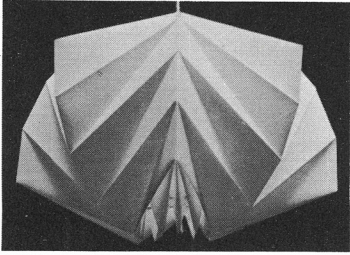
Thrige-Titan A/S, Tolderlundsvej 2, Odense.

Vilh. Pedersen A/S, Høng.

Sabroe of Aarhus have received several orders from Canada for this two-stage eight cylinder low-temperature refrigerator compressor.



**FROM
CHRISTMAS GIFT
TO EXPORT
ITEM**



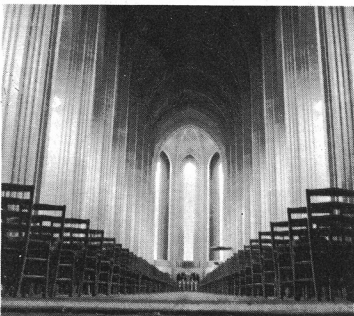
A Le Klint lampshade.

There is no clear link between the biggest church built in Denmark this century, the Grundtvig Church near Copenhagen, and the Le Klint lampshades. But the link exists, for the designer of the Le Klint shades was the architect responsible for Grundtvig Church, and spent the major part of his life developing these two things.

Both took decades to reach perfection. The Grundtvig Church was under construction from 1921 to 1941, and the Le Klint lampshades were the subject of experiment from 1901 to 1942.

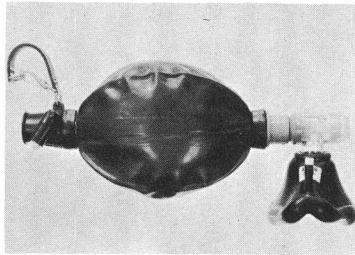
Originally, the Le Klint lampshades were given away as Christmas gifts by the Klint family to friends, but today they are sold in a multitude of varieties to more than 40 countries, including Canada.

Address in Canada: Danesco of Canada Ltd., 4188 Coutrai Ave., Montreal 26.



Grundtvig Church, interior.

A LIFE SAVER



Ambu suction pump for clearing air passages.

Thousands of lives have been saved in recent years with the help of Danish resuscitation equipment developed by Danish engineers in collaboration with the firm Ambu International and physicians.

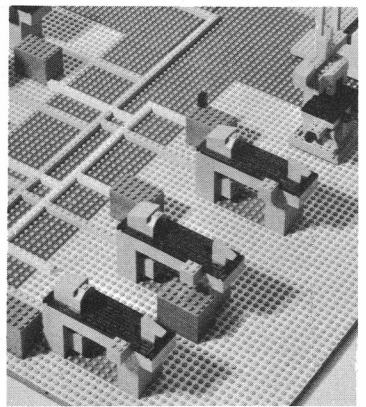
The Ambu method, as it is called, is now used in about 90 countries, and is accepted as a resuscitation system in cases where the lungs do not function for one reason or another.

It is used by hospitals, general practitioners, life-saving organisations, industrial first-aid services, in military forces and for education in schools.

Faith in the efficiency of the system has brought Ambu acceptance as standard equipment in many armies and ambulance corps. The system is used under both arctic and tropical climates.

Address: Ambu International, Marielundvej 32, Herlev.

**'TOYS'
FOR ADULTS**

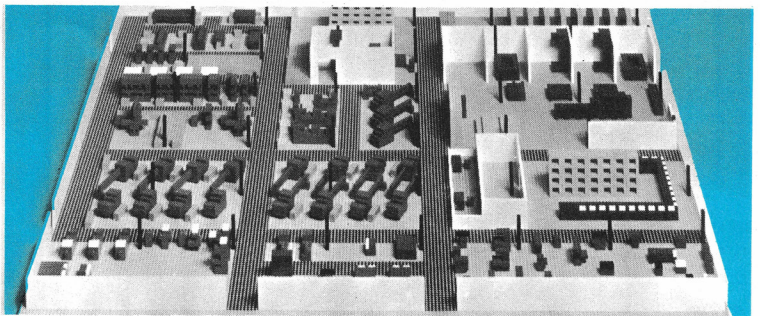


The Danish Lego Concern, which makes Europe's most-sold building toy, has now made a new planning tool called Modulex available for business and industry.

Modulex consists of a system of standard components in various colours that are attached to a board.

Since it uses all three dimensions, Modulex is particularly suitable in industrial planning. By moving machine symbols, shelves, walls, etc., it is possible to quickly reach the correct solution to a planning problem. Modulex is also used for planning boards, making it possible to keep up-to-date information on budget, sales, production, stores, transport, etc.

Address: A/S Modulex, Billund.



Three dimensional industrial planning models give the answer faster.

DANISH DRINK WITH WORLD REPUTATION

Danish beer, snaps, cherry wine and cherry liqueur are sold in more than 120 countries. Millions of litres of these drinks are exported from Denmark each year. Here are some samples:

More than 75 per cent of the snaps — another name is aquavit — consumed in the United States and Canada comes from Denmark. More than a half million litres are exported yearly.

As a beer exporting country, Denmark is the world leader when her size is taken into consideration. In 1965, about 80 million litres were exported.

Cherry Heering, which can be found in every restaurant of importance in the Western world, had an export of about four million bottles in 1965.

A firm called Danisco arranges for the export of aquavit, and has made the Danish national drink Aalborg Aquavit known over the whole of North America. It is used particularly for cocktails similarly to vodka, but those who have sat down to a true Danish lunch table know the cheerful atmosphere that develops when ice-cold Aalborg is taken undiluted with food. In Denmark it is often chilled to minus 15 or 20° C., but if one does not like the pleasant shock of a cold snaps, it can be enjoyed cellar-cool.

Two Copenhagen giant breweries, Carlsberg and Tuborg, stand for the bulk of beer exports.

Carlsberg, owned by a scientific fund, the Carlsberg Foundation, produced during the brewery's last financial year nearly 1,000 million bottles of beer and mineral waters, of which about 20 per cent were exported.

Tuborg, which since World War II has invested over 250 million D.Kr., in its production apparatus, has an export about as large as Carlsberg's. Tuborg owns Europe's fastest tapping



hall, which can fill 3,000 bottles per minute.

Bottling does not take place so quickly in the firm Peter F. Heering, but it is fast enough to make the firm the biggest producer of cherry liqueur. The firm has been owned and managed by the Heering family since 1818, and began exporting in that year. At the beginning, Danish ship captains took cases of Cherry Heering abroad, and exchanged them for spices and tropical fruits. The firm now has its own shipping line, and an international reputation.

But Danish cherry wine is also in

demand. Since 1957, the Svendborg Wine Company has exported the cherry wine, Prince of Denmark, to Canada. Prince of Denmark can now be found in all leading Canadian liquor stores.

Addresses:

Danisco, Kristianiagade 8, Copenhagen Ø.

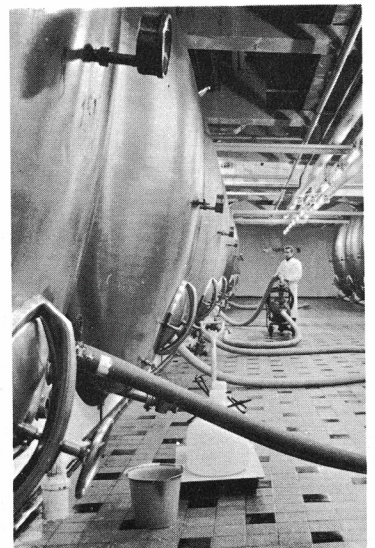
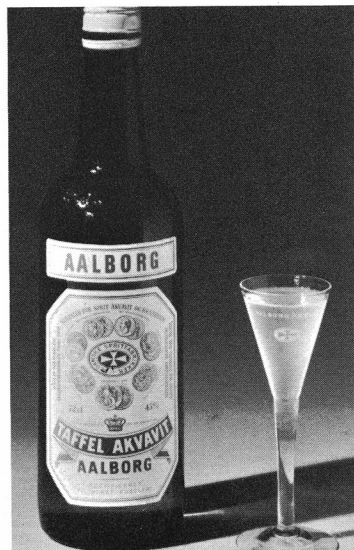
Carlsberg, Copenhagen V.

Tuborg, Hellerup, Denmark.

Peter F. Heering, Overgaden Neden Vandet 11, Copenhagen K.

Svendborg Wine Co. a.m.b.a., Svendborg, Denmark.

Aging operations at the Tuborg Breweries takes place in these storage tanks. Contents: 115 million bottles of beer.



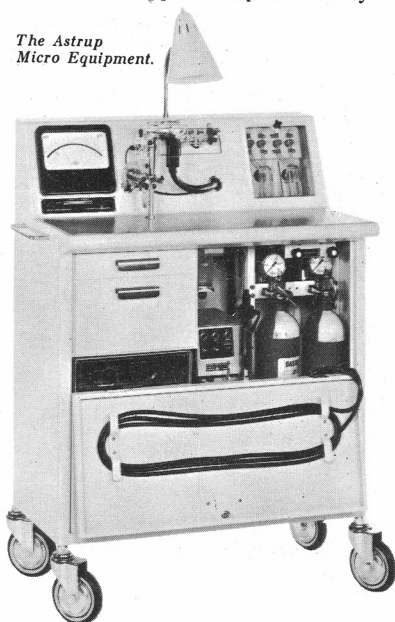
RAPID DIAGNOSIS

Within a few years, the electronics industry has grown to be one of the most important production spheres in Denmark, producing radio and television receivers and broadcast equipment, as well as complicated measuring instruments, radar, X-ray apparatus and many other items.

A leading electronics firm is Radiometer, of Copenhagen, which has specialised in measuring instruments. In collaboration with the research division of the Danish Slaughterhouses, equipment has been produced that quickly and accurately measure the quality of meat. The Radiometer "salt tester" is used by many slaughterhouses to determine the salt content of bacon. Radiometer also produce electronics for medical use, including the Astrup Micro Equipment, which is used by hospitals and laboratories all over the world for rapid diagnosis of blood tests.

Among the 200 different instruments and apparatus produced by

*The Astrup
Micro Equipment.*



Radiometer, a more recent development measures the sulphur compounds contained in oils.

Specialists in a slightly different way are Brüel & Kjær, a firm known mainly for acoustic measuring instruments.

Brüel & Kjær began developing such measuring instruments in 1945, aiming at designs that in every respect fulfilled international standard demands. Even then, it was realised there was a future in sound measuring instruments that were transportable, for sound and vibration measurements are now often made outside the laboratory.

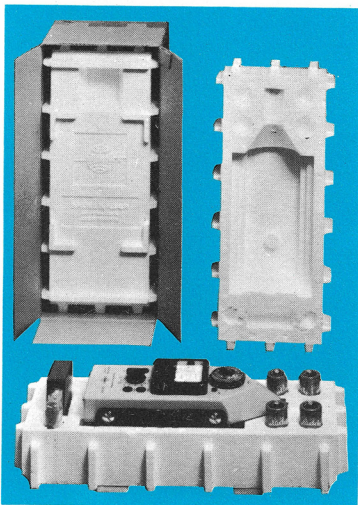
A typical example is a Brüel & Kjær apparatus that can measure and analyse sound and vibration under almost any conditions, and which at the same time fulfils the sternest international requirements.

Addresses:

Radiometer, Emdrupvej 72, Copenhagen NV.

Brüel & Kjær, Nærum, Denmark.

Sound measuring equipment from Brüel & Kjær. The firm has about 80 per cent of the world market in this field.



HELP FOR THE HARD OF HEARING



A new type of hearing aid.

Every sixth hearing aid used in the world today is of Danish origin.

This prominent position is the result of extensive audiological research carried out in Denmark since the start of the century. The results have been used by the firms Danavox and American Danish Oticon, who compete to produce the smallest but most effective hearing aid in the world.

Danavox recently issued a 'sub-minor earphone' on the market to help those persons who must use pocket aids. Oticon have a corresponding product, the 'sub-miniature Oticon hearing aid.'

American Danish Oticon, which is owned by a benevolent fund, has made hearing aids for more than 50 years. In Denmark alone more than 200,000 persons with hearing defects use Oticon aids, and over 2,000 churches are fitted with stationary Oticon aids.

Experience gained in the development of aid components has been further made use of in the creation of a large programme of electro-acoustic components. Danavox products are thus also used for dictation machines, tape recorders, etc., where equipment is necessary to hear a replay.

Addresses:

Danavox International A/S, Lersø Parkalle 112, Copenhagen Ø.

American Danish Oticon, Frederiksbjerggade 2, Copenhagen K.

**TEA
AND STEREO
PICKUPS**

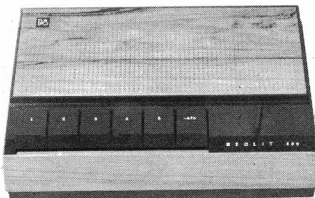


Bang & Olufsen tape recorder.

Bang & Olufsen tape recorders, transistor radios and stereo pickups are well-known products in Canada. B & O is represented by Noresco Ltd., of Vancouver and Ontario, who sell through dealers from coast to coast. This spring the firm will introduce the Beocord 2000 de luxe tape recorder. Canada already knows the Beolit transistor radio and the award winning B & O 15 stereo pickups. The B & O pickup operates with a needle pressure of 2 grams, which is equivalent to several tons per cubic centimetre due to the very small area of the needle point. In spite of this, very little heat is developed.

Technicians working in the Danish firm's laboratories have calculated it would take 100,000 years to heat the water needed for a cup of tea by using the heat produced with this pickup. Address: Bang & Olufsen, Struer.

This transistor radio made by Bang & Olufsen was awarded a 1966 ID prize for good industrial design.



**DANISH
AGRICULTURAL
MACHINES**



Combined haymaker from the JF Machine Factory, shown here turning swaths.

Denmark has about five million inhabitants, yet the productive capacity of Danish agriculture is so great that it can easily feed 50 million people. Therefore Denmark has an agricultural export that per capita is one of the world's largest.

This is due partly to a well-trained population of farmers, but also to very effective agricultural machines which have in recent years become a considerable export. One of the largest in this field is the JF factory of Sønderborg, with an annual production of about 30,000 machines.

For many years the factory has sold its products in Canada, a main seller being their combined haymaker. About 1,000 of them are in use on

Canadian farms at present. The machine is used to turn, spread and rake grass, hay and straw.

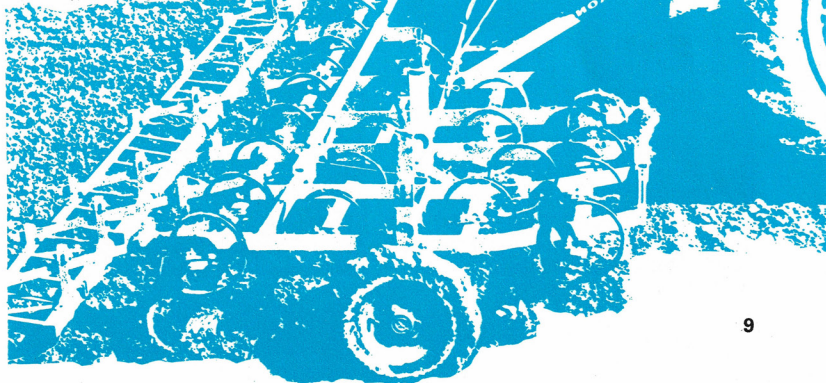
Kongskilde, of Sorø, sell for more than a million dollars yearly in Canada alone. The firm's best seller is the Triple K Cultivator. At present it is supplied with working widths ranging from five to 18 feet, but very shortly larger cultivators will reach the market, able to cover about 32 feet. This corresponds to a 150 HP tractor.

Both JF and Kongskilde have subsidiary companies in Canada.

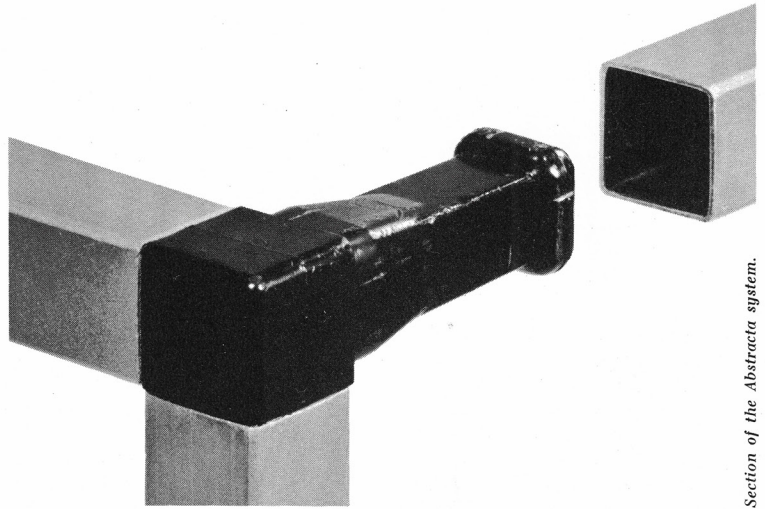
Addresses in Canada:

Kongskilde Ltd., Exeter, Ontario.
JF-Farm Machinery, Exeter, Ontario.

Harrow from Kongskilde Machine Factory.



**WALL
SHELVES,
ABSTRACTA
AND CADO**



Section of the Abstracta system.

In the autumn of 1945 a Danish architect and six assistants began to make venetian blinds in the Jutland university city of Aarhus. The architect, Poul Cadovius, is today the owner of three large factories with a staff of more than 500, and the systems Cadovius has developed are produced by 28 licence holders on all continents.

The first Cadovius success was launched in 1951. He introduced a system of shelves called the Royal System. It was far more than a set of shelves. Tables could be folded up into the shelves, writing desks were included, and the system in fact made up a complete set of furniture.

The success that followed is probably not unrelated to the modest size of modern apartments. The system was developed to give the best possible use of costly space.

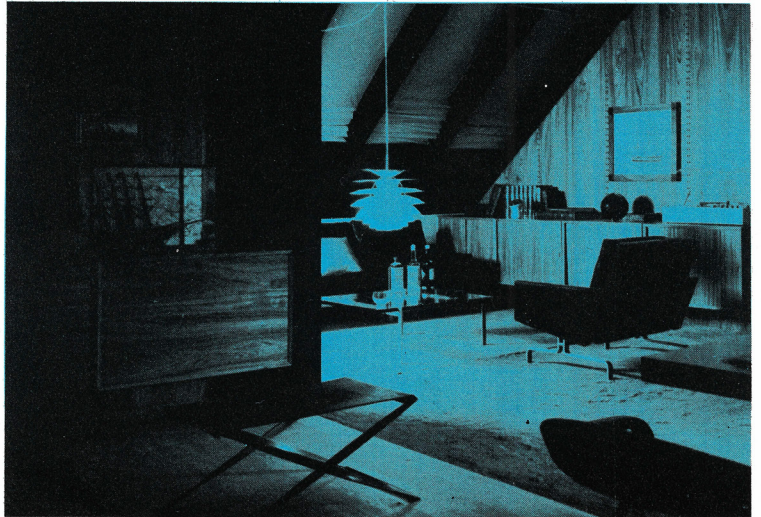
In 1960 the Cado system was presented. Its basic element is made up of wood panels that cover a complete wall. The panels are attached by two screws or are used to divide a larger room. In both cases they form the background for an extensive range of shelves and drawer furniture.

A year later, Cadovius presented yet another system: Abstracta. He turned to metal to produce a pipe and link system. With its help, anything can be constructed: shop fittings, display stands, bookshelves, scaffolding, even houses and display halls. A display hall on the Abstracta System can be erected in one day.

Cadovius interests in Canada are in the hands of R. S. Associates Ltd., 1400 Jules Poitra, Montreal 9.



The Abstracta system, used at an exhibition in Copenhagen's Bella Centre.



Wall panels in palisander, designed by Poul Cadovius.

LOCAL TREATMENT ANTIBIOTICS

Sensitivity of patients to antibiotics and the development of bacteria's resistance to them are two of the main current problems in modern treatment of hospital patients.

Therefore it is vital that some medicinal factories, including a Danish, have specialised in the development of antibiotics used mainly for local treatment. The Danish firm H. Lundbeck & Co., started many years ago to develop such products, and since then have sent Tyrothricin, Gramicidin, Neomycin, Bacitracin and Amphomycin on the market. At the same time, a new type of ointment was developed that had great absorptional ability and could be used in many cases of illness.

The principles behind the ointment have gained great scientific recognition, and these preparations are today used widely in many countries.

Topical use requires special antibiotics in selected developed vehicles.



The same was the case for Lundbeck's sulphonamide preparation, containing Sulphamethylthiadiazol as its active element. In various forms, this was the first completely independent product Lundbeck launched. It gained world attention when it was found to be particularly suited to curing infections of the urinal passage.

Lundbeck's latest speciality is preparations in the field of psychopharmacology. Since 1955 the firm has carried out a lengthy research programme in this field. The results include products such as neuroleptica within the Thioxanthen group and thymoleptica in the Dibenzocycloheptadien group.

Address: H. Lundbeck & Co. A/S, Ottiliavej 7, Copenhagen-Valby.

CURTAINS OF GREENLAND WOOL

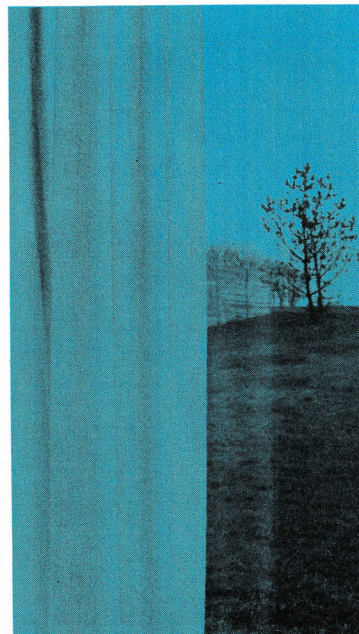
The northernmost part of Denmark and Canada's neighbour, Greenland, produces an excellent quality wool that has proved itself suited to the manufacture of furnishing textiles in attractive natural colours and fine texture.

A Jutland firm, Messrs. Gabriel of Fredericia, has developed the advantages offered by Greenland wool in a production of carpets and rugs, curtain and furnishing cloths that have won favour abroad. In Canada, Gabriel has showrooms and warehouses in several larger cities, and sales to North America are organised from Montreal to both Canada and the United States.

Many Danish artists collaborate with Gabriel in designing the firm's products.

Address: Gabriel Textiles Ltd., 4188 Courtrai, Montreal 26, Canada.

Kivik Curtains of Greenland wool.



**DINNER
FOR ALL IN
NEW YORK AND
LONDON**

The Danish food concern Plumrose has a major share of ham exports to America, a fact due partly to the Plumrose factory at Springfield, Illinois. At this factory, hams are taken out of cans, sliced, and re-packed in vacuum-sealed consumer size plastic packages.

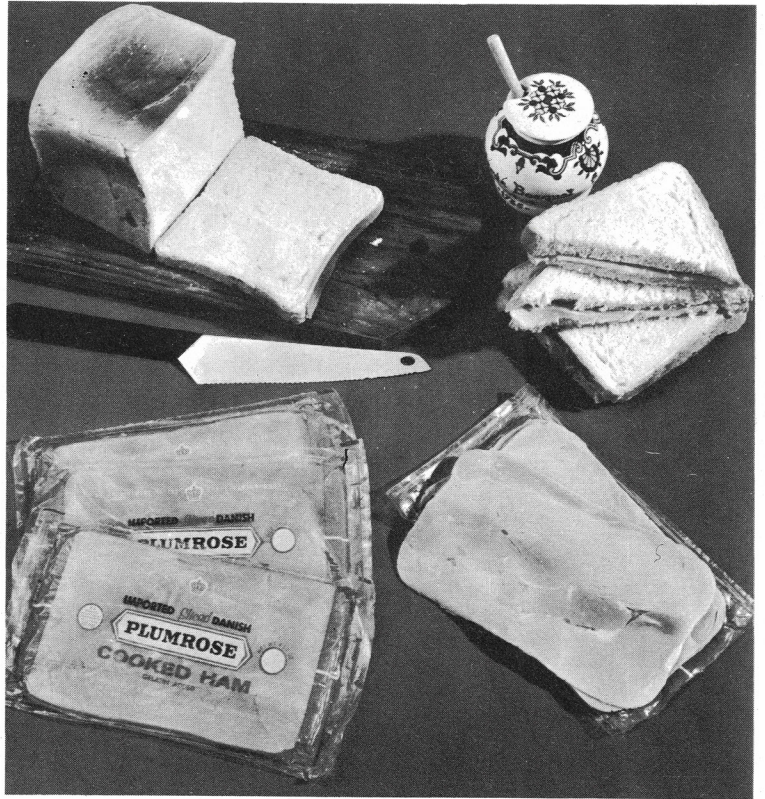
All this is made necessary because of legislation that prohibits the import of 'open meat' into the United States. The Springfield factory produces about two million slices of ham and other meat weekly, and last year Plumrose sold meats to the United States for 20 million dollars.

Plumrose has been in the food business for more than a century, and at present has seven factories in Denmark. In addition to canned hams, the firm exports shoulders, Danish hot dogs, cocktail sausages, Pate de Foie, Luncheon Salami, etc., to 140 countries.

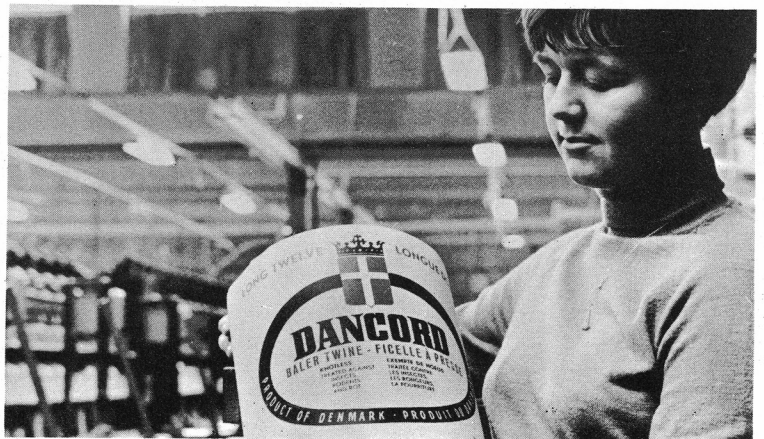
The Plumrose stocks of meat and cheese — also exported — are so great that at any given moment the firm could serve a dinner to every inhabitant in New York City and London simultaneously.

Address: Plumrose, Skt. Annæ Plads 26, Copenhagen K.

Sliced ham in consumer-size plastic packages from Plumrose, Springfield, Illinois.



*Four
large Danish
rope and cord factories
have formed an export
association named Dancord.
Since 1960, Dancord have exported
bindertwine and baling twine
to Canada. Address:
Dancord, Esbjerg
Tovværksfabrik,
Esbjerg.*



LARGE MARKET FOR B & W ENGINES IN CANADA

Burmeister & Wain, Denmark's largest industrial concern, have in recent years created a considerable market for their marine diesel engines in Canada. Over a few years, a dozen powerful tugs have been built in Canada, equipped with B & W Alpha engines. These robust two-stroke diesel engines are constructed specially for use in tugs, fishing vessels, smaller ferries and various other smaller special purpose vessels.

Several modern and very effective fishing vessels have been built in Canada also, and equipped with these Danish engines. A rather special form of recognition by the very highest authority was given B & W engines when the Fisheries Research Board of Canada fitted these power sources in several new fishery research vessels.

A few years ago, the fishery research vessels "A. T. Cameron" and "G. B. Reed" were built, and were fitted with B & W Alpha engines of type 498-RVO, developing 960-1,050 BHP. Recently Canada again built a fishery research vessel, the M/S "E. E. Prince" which was named in honour of the late Professor Edward E. Prince, for many years the Chairman of the Biological Board of Canada. A B & W Alpha engine was also preferred for this vessel.

B & W engines have in Canada also been chosen for considerably larger ships. A high-pressure, turbo-charged two-stroke engine has been installed in the tanker "Imperial Acadia," 9,250 dwt., built for the Imperial Oil Co.

Burmeister & Wain have delivered these engines direct, but in addition, a British B & W licensee, Harland & Wolff Ltd., recently supplied the B & W diesel engine fitted in a bulk carrier built for Upper Lakes Shipping Ltd., for traffic on the Great Lakes and the St. Lawrence Seaway.

Several modern car ferries fitted with B & W motors also sail on the

St. Lawrence Seaway. The largest of these ferries, M/S "Trans-St-Laurent," is powered by two 8-cylinder B & W Alpha engines with a combined power output of 2,200 BHP.

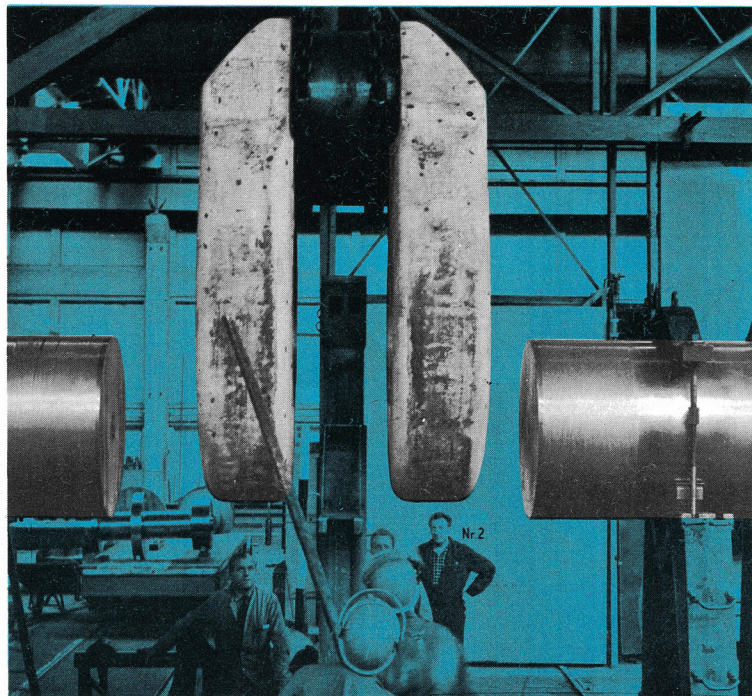
Port Weller Dry Docks Ltd., at St. Catharines, Ontario, have built most of the Canadian vessels using B & W engines, and as a natural extension of this excellent cooperation have been given authorisation to service and repair B & W diesel engines and supply original B & W spare parts.

Burmeister & Wain have other agents in Canada. Marine & Power Equipment Ltd., Montreal is the agent for Eastern Canada, Earle Sons & Co. Ltd., St. John's, for Newfoundland, and Dodwell Diesel & Equipment Ltd., Vancouver, for Western Canada.

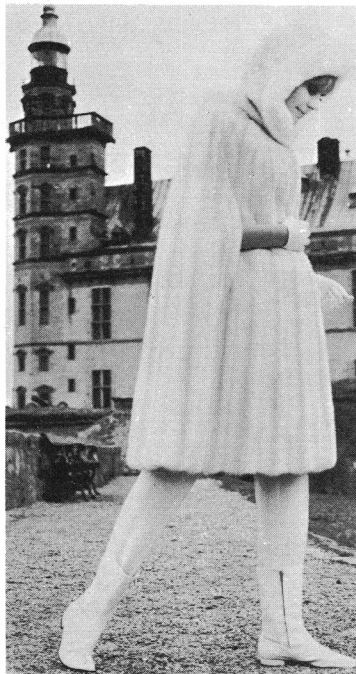
Burmeister & Wain — engine works and shipyard — is the biggest industrial concern in Denmark, and has about 10,000 employees. The firm delivered the world's first ocean-going diesel powered motor vessel, M/S "Selandia," from their yard in Copenhagen in 1912, and since then have maintained their position as a leading constructor of marine diesels. Today the firm can deliver diesel motors with output up to about 43,000 BHP — powerful enough to power ships of up to about 300,000 dwt.

The firm also has a considerable production of stationary engines used for a variety of purposes, including electricity generating, and these engines also are exported widely.

Assembling a crankshaft for a new type of large B&W engine.



**WORLD'S
BIGGEST MINK
AUCTIONS**



A lady in Saga mink by Kronborg Castle, Elsinore.

About 6,000 mink farms back up Denmark's position as the second largest mink producing country, with a total production in 1966 of some three million skins. Average quality is high, and most of the breeders in the Danish Fur Breeder Association sold their skins under the Saga brand — the quality brand for top class Scandinavian mink.

Fur experts from all over the world come to Copenhagen four times yearly to bid for mink in the new auction halls of Danish Fur Auctions, in a building designed to meet the needs of the world's biggest mink auction.

Of the total area of 13,450 m², sorting and viewing take up 9,000 m², allowing 350 buyers to work simultaneously. Storage rooms are air conditioned and special plant has been installed to give the correct humidity. Cooled storage rooms can hold 300,000 skins. A department in Danish Fur Auctions arranges hotel, ticket and restaurant reservations, etc., while telephone, radio, television and tele-

printer equipment gives effective internal and external communications. Conference and rest rooms are available.

Today, Danish Fur Auctions hold the world's biggest mink auction. The total production of Denmark and Finland is offered at four auctions, the first in December, the last in May. A total of 500,000 skins worth 60 million D.Kr. (about nine million dollars) were sold on one auction day in the 1965-66 season — equivalent to a rate of 100,000 D.Kr. per minute. Total turnover for the season was 425 million D.Kr. (about 68 million dollars) and 95 per cent of the skins went abroad.

The Royal Greenland Trading Company, which has sold polar bear and seal skins for over 200 years, has moved its sales to Danish Fur Auctions, and so has the American organisation Empress Chinchilla for the furs they wish to sell in Europe.

Address: Danish Fur Auctions, Langagervej 60-70, Glostrup, Denmark.

Selling at the rate of 100,000 D.Kr. per minute.



LEISURE FURNITURE

Within the next two decades, every fifth family in Denmark is expected to have two homes. One will be for everyday use, while the second, close to a beach or forest, will be the week-end and summer holiday home.

Even now, there is a considerable and growing demand for furniture for the second home, for quite different demands are made on furnishing compared to the furniture of a traditional home.

Farstrup Sawmill and Chair Factory A/S, make chairs in beechwood

lacquered in both lively and quieter colours — together with appropriate tables and other furniture in pine, natural colour or in cottage blue.

These are sold in Denmark, but also to overseas countries, including Canada. To meet this export demand, Farstrup have made many models, including the 'stick chair' that can be dismantled for easy packing and shipment.

Address: Farstrup Savværk & Stolefabrik A/S, Farstrup, Denmark.



Farstrup interior in a leisure home.

Chewing gum and bubble gum are now the biggest export products made by the Danish sweet and chocolate industry, and are produced by the concerns, Danish Chewing Gum Factory, at Vejle, and Werner Hansen & Co. Ltd., of Birkerød. In 1965, the export value of gum amounted to 16,460,000 D.Kr., shipped off to 75 countries — including Canada which bought for D.Kr. 301,000.

In 1955, the export value of Danish chewing gum amounted to D.Kr. 2,849,000, so that over the decade to 1965 there has been a 575 per cent increase. The increase in sales continues, and the value of Danish chewing gum exports in the first eight

months of 1966 amounted to D.Kr. = 2,435,900, including gum for D.Kr. 349,200 to Canada.

Danish gum is shipped to eastern and western Canadian ports and distributed all over the country. There is a solid market for sugar coated chewing gum in four piece packs, as well as 10 piece and 12 piece packs which are also made by both the Danish factories. There is also a heavy demand for Danish specialties in bubble

gum, bubble gum coins made by Werner Hansen & Co., and picture gum, made by Danish Chewing Gum factory. The latter firm is about to launch a new type of gum on the Canadian market. Named Stimorol, it appeals to adults, and smokers in particular.

Addresses:

Werner Hansen & Co. Ltd., Strandøre 10, Copenhagen Ø.

Danish Chewing Gum Factory A/S, Vejle, Denmark.

DANISH CHEWING GUM



MARZIPAN FROM ODENSE

In recent years, the production of marzipan has reached astonishing proportions in Denmark. From status as a minor domestic industry, handmade from almonds and sugar, it has become an industrial speciality for a growing concern.

The firm is Odense Marzipan Factory, which now has 50 years' experience in the trade. Due to strict hygienic requirements and the development of its own special machines that prepare two-pound airtight packs for shops and 8 oz cellophane rolls for housewives, this concern is now able to sell all over the world.

A well-fitted laboratory and a testing kitchen control production and maintain and improve the high quality standard.

Agents in Canada:

Rose & Laflamme Ltd., 1461 Parthenais St., Montreal 24, Quebec.

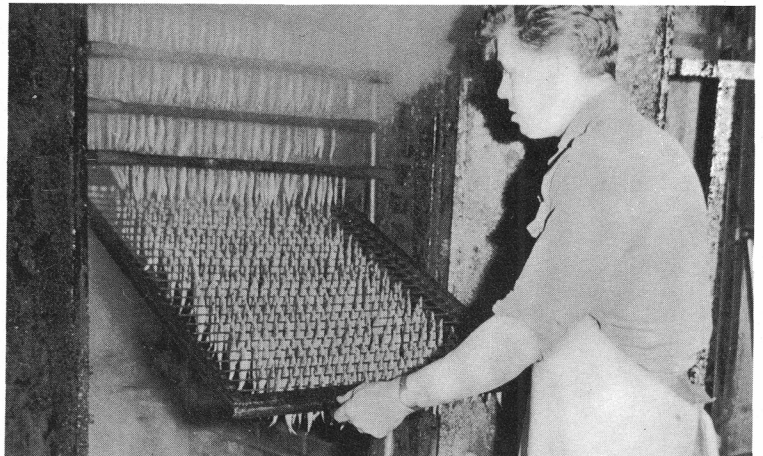
McKenzie Stephenson (Western) Ltd., 345 Higgins Ave., Winnipet 1, Manitoba.

McKenzie Stephenson (Western) Ltd., 3610 Cornett Road, Vancouver 12, B.C.

Kirkland & Rose Ltd., 405 Railway St., Vancouver 4, B.C.



Smoked sprats from Glyngøre being drawn from the smoking oven. Later they will be put in oil in circular 4 1/2 oz. cans. Glyngøre Fish Industries also sell mackerel fillets in oil packed in 3 3/4 oz. cans. Glyngøre's agent for North America is J. Reede Co., 250 Broadway, New York, N.Y. 10007.



**LEAVE
THE CHOCOLATE
TO JENSEN**

In the chocolate industry, the name Jensen is world famous. This is due to the fully-automatic chocolate casting plant made by Mikroværk A/S, bearing the name of its inventor, Johannes Jensen.

It is only about 40 years since Johannes Jensen, the founder of Mikroværk, produced the world's first fully-automatic plant for casting chocolate.

Over 500 Jensen machines have since been delivered to hundreds of chocolate factories all over the world. As Jensen plant is an important factor

in the production equipment of firms such as Cadbury, Nestlé, Suchard, Rowntree, Tobler, Lindt & Sprüngli, Hershey, General Foods, etc., this means that most of the cast chocolate goods produced are made on Jensen plant.

A Jensen plant can automatically produce bars of pure chocolate, or with fillings of cream, nougat, caramel, toffee, etc., and also other chocolate goods down to drops of $\frac{1}{10}$ gram.

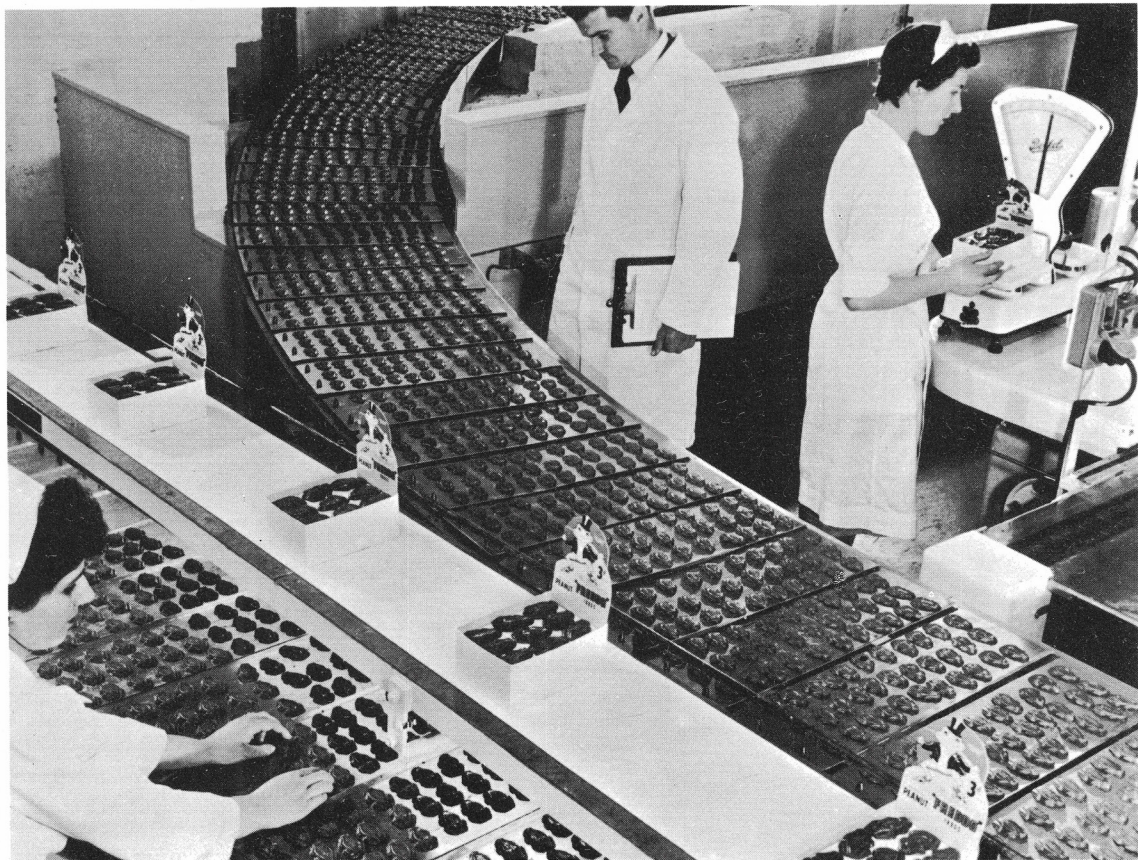
The principles used in the first Jensen plant have since been followed

by a large number of patented improvements. It is also of importance that Mikroværk, with its great accumulation of experience, can in addition to advice of a technical nature also assist in preparation of new recipes, production of raw materials, etc.

Service is provided in all countries where Jensens plant is in use. For Northern America, Mikroværk (Canada) Ltd., of Toronto, provides service for Jensen customers.

Address: 90, Advance Road,
Toronto 18th, Ontario.

Automatic machine from Mikroværk for making chocolate frogs.



DANISH DESIGN

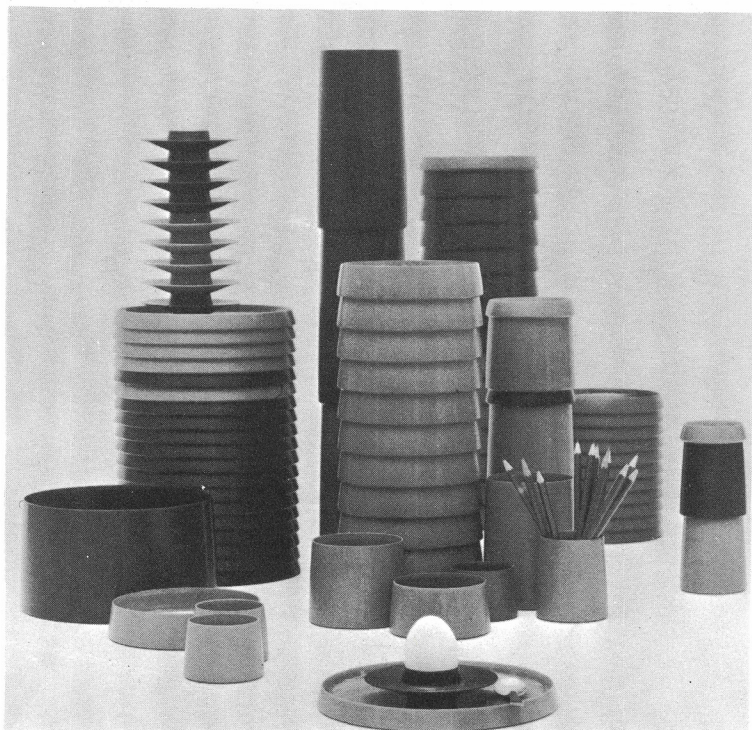
Dishes, ash-trays, vases, designed by Kristian Vedel and made in melamin plastic for Torben Ørskov. The dish used as an ashtray in the evening can be used for butter the next day, for melamin is resistant to taste and smell. Vedels melamin was awarded the Gold Medal at the Milan Triennial in 1960.

Kastrup and Holmegaards Glass-works, Nørrevoldgade 12, Copenhagen K, have in their Holmegaard division in Fensmark lately started production of a completely new art glass series designed by Per Lütken. Named 'Moonstone', this series includes vases, ash-trays, bowls and candle sticks. The series was given this name because of the special, very rare colour of these hand-made, mouth-blown pieces, a faint gray-blue.

Easy chair designed by Adrian Heath for France & Son, Hillerød.

Georg Jensen Silversmiths A/S, Ragnagade 7, Copenhagen Ø, started production of a sterling silver coffee set in 1966. The set is designed by Soren Georg Jensen.

Although Danish arts and crafts are characterised by new forms, there is still room for tradition. Above: Porcelain figures from Bing & Grøndahl. Below: One of the more appealing traditions is the annual production of the Royal Porcelain Manufactory of special Christmas plates. The 1966 Christmas plate was designed by artist Kai Lange.





Published by the Press and Information Department
of the Royal Danish Ministry for Foreign Affairs,
Christiansborg, Copenhagen, Denmark.
Editors: Kai Johansen,
Chief of the Press and Information Department,
Søren Dyssegaard and Ole Malmqvist.
Lay-out: Erik Nielsen, Grafisk tegnestue, Århus.
Reproduction permitted without acknowledgment.
Printed by Duo Tryk, Copenhagen.

